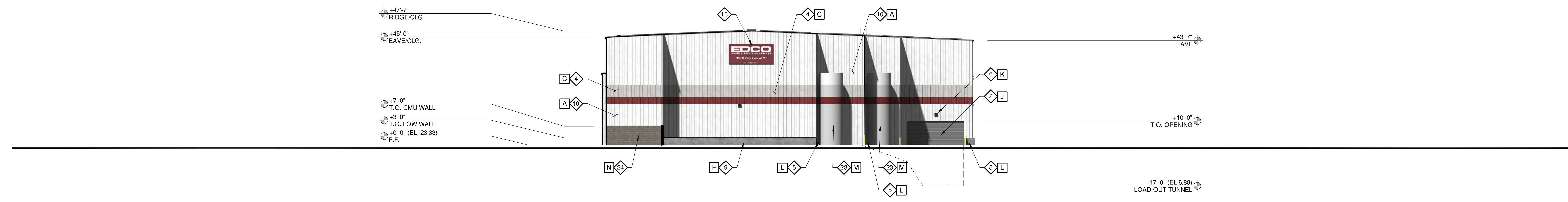
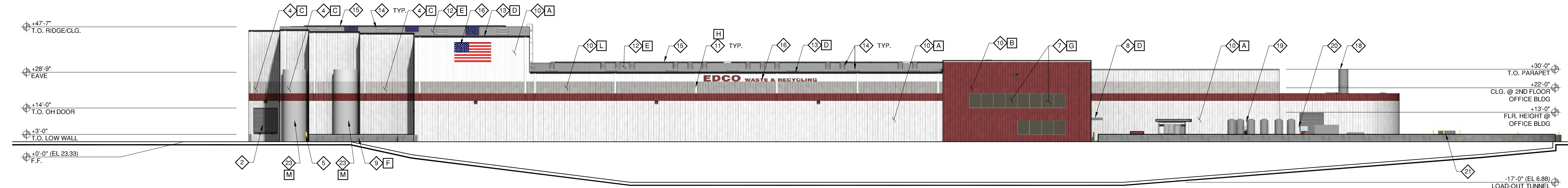


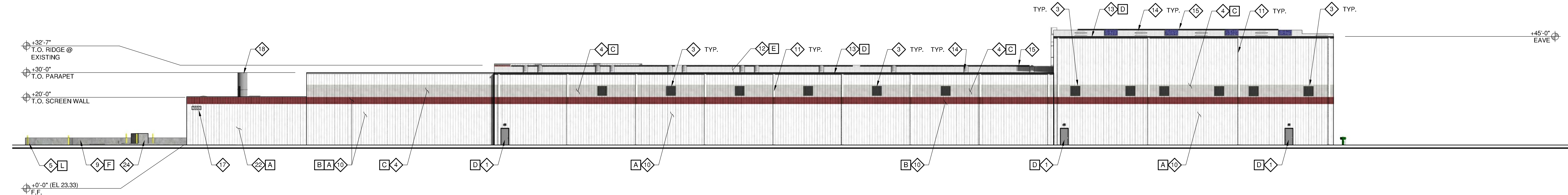
NORTH



SOUTH



EAST



WEST

KEYNOTES

- 1 FLUSH PANEL DOOR
- 2 OVERHEAD COILING DOOR
- 3 EXHAUST FAN
- 4 TRANSLUCENT PANEL
- 5 CONCRETE FILLED PIPE BOLLARD
- 6 WALL MOUNTED LIGHT FIXTURE
- 7 STOREFRONT WINDOW SYSTEM
- 8 METAL CANOPY
- 9 LOW CONCRETE WALL
- 10 EXTERIOR METAL WALL PANEL (PEMB)
- 11 METAL DOWNSPOUT (PEMB)
- 12 METAL ROOF PANEL (PEMB)
- 13 EAVE GUTTER (PEMB)
- 14 SKYLIGHT (PEMB)
- 15 LOW PROFILE RIDGE VENT (PEMB)
- 16 BUILDING SIGNAGE
- 17 BUILDING ADDRESS SIGN
- 18 BIO-GAS FLARE
- 19 CNG STORAGE TANKS
- 20 CNG DISPENSER
- 21 RELOCATED TRANSFORMER
- 22 METAL SCREEN WALL
- 23 WATER HARVESTING TANK
- 24 CMU WALL

FINISH NOTES

MANUFACTURER	PRODUCT/COLOR
A	METAL SALES 24 GA (VERTICAL) COLOR : SNOWDRIFT WHITE, MATCH EXISTING
B	METAL SALES 24 GA (VERTICAL) COLOR : COLONIAL RED, MATCH EXISTING
C	CPI DAY LIGHTING TRANSLUCENT WALL PANEL COLOR : REFLECTIVE GRAY, MATCH EXISTING
D	METAL SALES COLOR : SLATE GRAY (W38), MATCH EXISTING
E	METAL SALES 24 GA ROOF PANEL COLOR : SNOWDRIFT WHITE
F	N/A CAST-IN-PLACE CONCRETE GRAY
G	WINDOW SYSTEM COLOR: CLEAR ANODIZED ALUMINUM GLAZING: EXTERIOR PANE - OPTIGRAY 23, OR EQUAL INTERIOR PANE - CLEAR
H	METAL TRIM COLOR: MATCH SNOWDRIFT WHITE
J	COILING DOOR COLOR: SLATE GRAY (MATCH EXISTING)
K	LIGHT FIXTURE COLOR: SLATE GRAY (MATCH EXISTING)
L	METAL SALES 24 GA (VERTICAL) COLOR : OLD ZINC GREY, MATCH EXISTING
M	STEEL TANK COLOR: MATCH BUILDING PANEL COLORS
N	ORCO BLOCK 8X8X16 STANDARD BLOCK, RUNNING BOND, COLOR: MATCH EXISTING